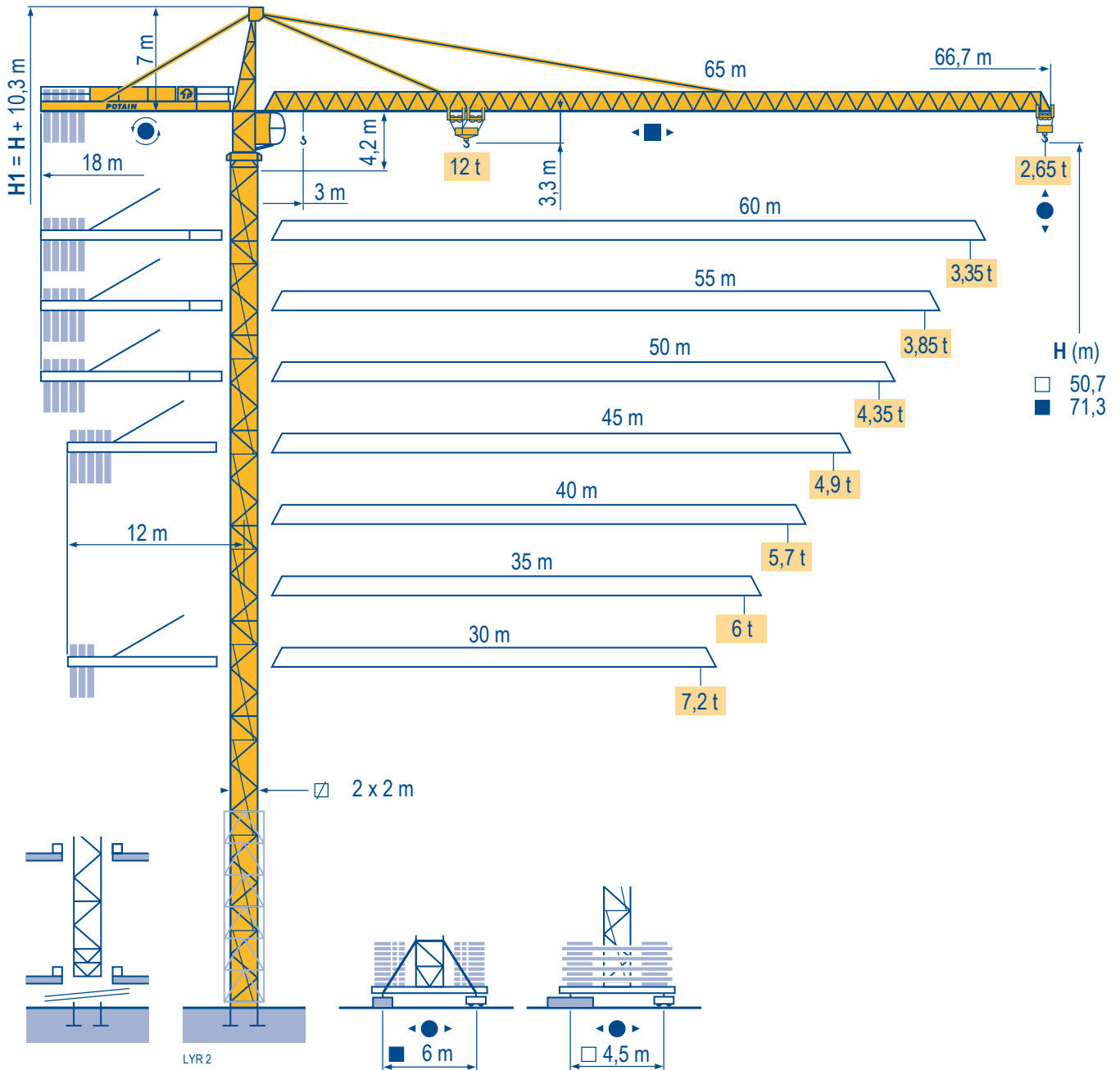


MD 265 B1 J12

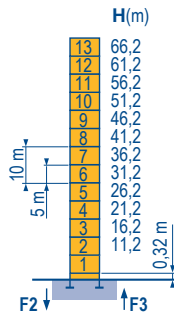


TOPKIT

CE FEM 1.001-A3

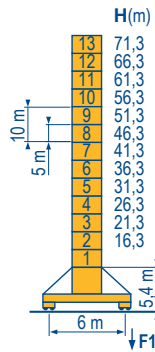
Mat / Réactions \square 2 m
 Maste / Eckdrücke \square 30 m \Rightarrow 65 m
 Masts / Reactions
 Mástil / Reacciones
 Torre / Reazioni
 Tramo / Reações

LVR 1



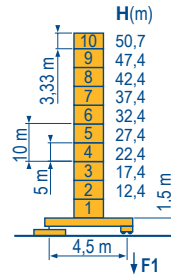
P 61 A

F2	● 166 t
	■ 224 t
F3	● 114 t
	■ 177 t
	▲ 73 t



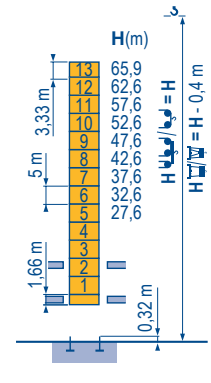
V 60 A

F1	● 114 t
	■ 147 t
	▲ 86 t



ZD 463

F1	● 96 t
	■ 96 t
	▲ 78 t

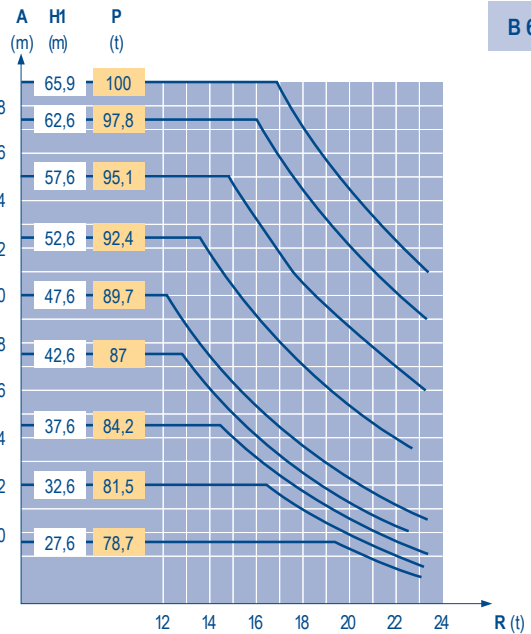
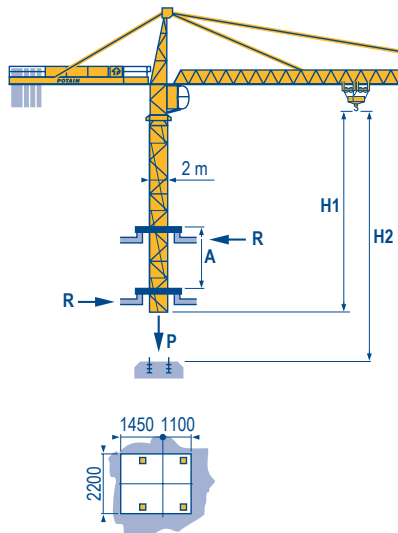


B 60 A



Télescopage sur dalles
 Kletterkrane im Gebäude
 Climbing crane
 Telescopage gruas trepadoras
 Gru in cavedio
 Telescopagem sobre lages

LVR 1



B 60 A

TOPKIT
 MD 265 B1 J12

POTAIN

F

● Réactions en service
 ■ Réactions hors service
 A vide sans lest (ni train de transport) avec flèche et hauteur maximum.

● Nous consulter

D

● Reaktionskräfte in Betrieb
 ■ Reaktionskräfte außer Betrieb
 Ohne Last, Ballast (und Transportachse), mit Maximalausleger und Maximalhöhe.

● Auf Anfrage

GB

● Reactions in service
 ■ Reactions out of service
 Without load, ballast (or transport axles), with maximum jib and maximum height.

● Consult us

E

● Reacciones en servicio
 ■ Reacciones fuera de servicio
 Sin carga, sin lastre, (ni tren de transporte), flecha y altura máxima.

● Consultarnos

I

● Reazioni in servizio
 ■ Reazioni fuori servizio
 A vuoto, senza zavorra (ne assali di trasporto) con braccio massimo e altezza massima.

● Consultateci

P

● Reações em serviço
 ■ Reações fora de serviço
 Sem carga (nem trem de transporte)- sem lastro com lança e altura máximas.

● Consultar-nos

Courbes de charges

Lastkurven

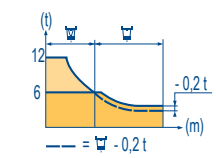
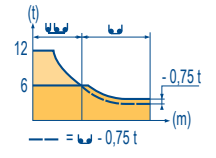
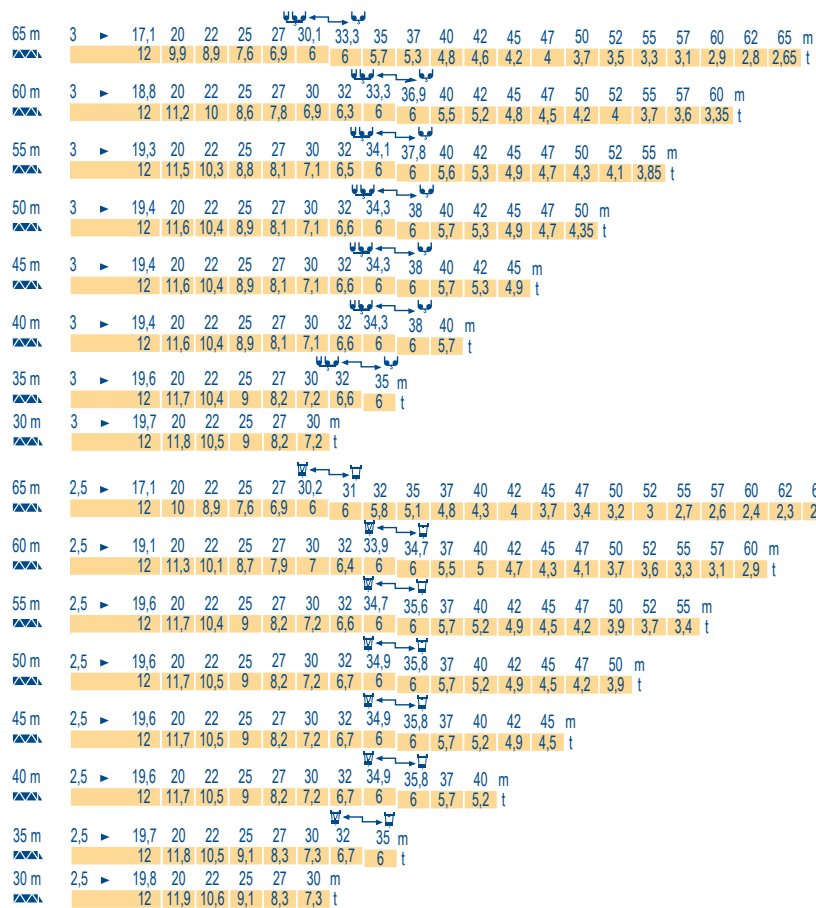
Load diagrams

Curvas de cargas

Curve di carico

Curva de cargas

LVR 1



Lest de contre-flèche

Gegenauslegerballast

Counter-jib ballast

Lastre de contra flecha

Contrappeso

Lastros da contra lança

LVR 2

	4 600 - 4 200 - 3 400 - 2 300 kg		4 200 - 700 kg	
		50 - 75 - 100 LVF (kg)	50 - 75 - 100 LVF (kg)	150 LCC (kg)
65 m	18 m	19 900	19 600	17 500
60 m	18 m	18 400	18 200	16 800
55 m	18 m	16 000	15 400	14 000
50 m	18 m	13 700	13 300	11 900
45 m	12 m	25 200	24 500	23 800
40 m	12 m	24 100	23 100	21 700
35 m	12 m	20 600	19 600	18 200
30 m	12 m	16 000	15 400	14 000

Lest de base

Grundballast

Base ballast

Lastre de base

Zavorra di base

Lastros da base

LVR 1

V	H (m)	H (m)													
		71,3	66,3	61,3	56,3	51,3	46,3	41,3	36,3	31,3	26,3	21,3	16,3		
2 m	V 60 A	132	96	72	60	36	36	36	36	36	36	36	36	36	
2 m	ZD 463	75	75	75	75	75	75	75	75	75	75	75	75		

Ancrages

Verankerungen

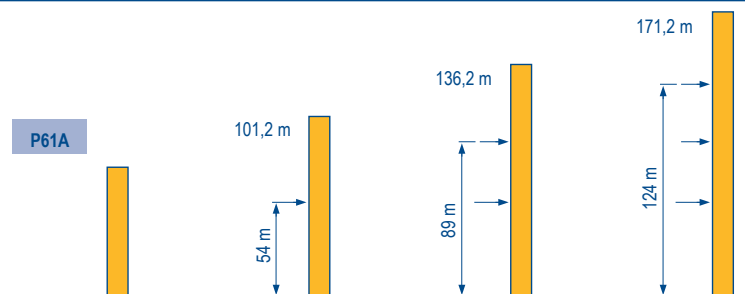
Anchorges

Anclaje

Ancoraggio

Ancoragem

LVR 1



TOPKIT

MD 265 B1 J12

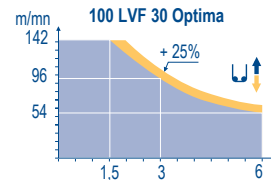
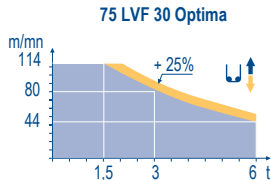
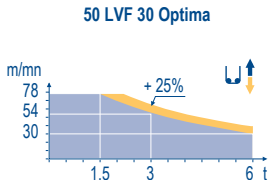


	F	D	GB	E	I	P
A	Distance entre cadres	Abstand zwischen den Rahmen	Distance between collars	Distancia entra marcos	Distanza fra i telai	Distância entre quadros
H1	Hauteur grue	Kranhöhe	Crane height	Altura grúa	Altezza gru	Altura da grua
P	Poids de la grue(en service)	Krangewicht (in Betrieb)	Crane weight (in service)	Peso de la grúa (en servicio)	Peso della gru (in servizio)	Peso da grua (em serviço)
R	Réaction horizontale	Horizontalkräfte	Horizontal reaction	Reaccion horizontal	Reazione orizzontale	Reacção horizontal
	Voir télescopage sur dalles	Siehe Kletterkrane im Gebäude	See climbing crane	Veja grua trepadora	Consultare gru in cavedio	Ver telescopagem sobre lages

Mécanismes
Antriebe
Mechanisms
Meccanismi
Mecanismos

LYR 4

		↕ ↑					↕ ↕ ↑					ch - PS hp	kW	
↕	50 LVF 30 Optima	m/min	2,4 → 9,6 → 30 → 38 → 54 → 78	1,2 → 4,8 → 15 → 19 → 27 → 39	50	37	340 m							
		t	6 6 6 4,5 3 1,5	12 12 12 9 6 3										
	75 LVF 30 Optima	m/min	0 → 44 → 56 → 80 → 114	0 → 22 → 28 → 40 → 57	75	55	570 m							
		t	6 4,5 3 1,5	12 9 6 3										
↕	100 LVF 30 Optima	m/min	0 → 54 → 68 → 96 → 142	0 → 27 → 34 → 48 → 71	100	75	1019 m							
		t	6 4,5 3 1,5	12 9 6 3										
	150 LCC 30	m/min	86 → 103 → 129 → 172 → 206	43 → 52 → 65 → 86 → 103	150	110	652 m							
		t	6 4,5 3 1,5 0,75	12 9 6 3 1,5										
↔	6 DVF 4	m/min	0 → 50 (12 t) 0 → 100 (6 t) 0 → 120 (3 t)			5,5	4							
↻	RVF 152 Optima	tr/min U/min rpm	0 → 0,7			2 x 5,5	2 x 4							
↔	ZD 463 RT 443 A1 2V	m/min	15 - 30			4 x 5	4 x 3,7							
↔	V 60 A RT 544 A1 2V R ≥ 13 m	m/min	13,5 - 27			4 x 7	4 x 5,2							
CEI 38		IEC 38					kVA							
400 V (+6% -10%) 50 Hz							50 LVF : 70 kVA 75 LVF : 95 kVA 100 LVF : 120 kVA 150 LCC : 170 kVA							



- | | | | | | |
|--|--|--|--|---|---|
| F
Levage
Distribution
Orientation
Translation | D
Heben
Katzfahren
Schwenken
Kranfahren | GB
Hoisting
Trolleying
Slewing
Travelling | E
Elevación
Distribución
Orientación
Traslación | I
Sollevamento
Distribuzione
Rotazione
Traslazione | P
Elevação
Distribuição
Rotação
Translação |
|--|--|--|--|---|---|

Document commercial non contractuel. Pour toute information technique se référer à la notice correspondante. Unverbindliches Vertriebsdokument. Für technische Informationen, siehe die entsprechenden Anweisungen. This commercial document is not legally binding. For any technical information, please refer to the corresponding instructions. Documento comercial no contractuel. Para cualquier información técnica, ver la noticia correspondiente. Documento commerciale non vincolante, per tutte le informazioni tecniche fare riferimento al catalogo istruzioni. Documento comercial não contractual. Para qualquer informação técnica complementar consultar as respectivas instruções.



Americas
Tel : +1 888 479 7278
Tel : +1 717 593 2000

Europe – Middle East – Africa
Tel : +33 (0) 4 72 81 50 00
Tel : +44 (0) 191 522 2000

Asia – Pacific
Tel : +65 6264 1188
Fax : +65 6862 4142

www.manitowoccrane.com

**18, rue de Charbonnières - B.R.173
69132 ECULLY Cedex - France**
Tél. : +33 (0) 4 72 18 20 20
Fax. : +33 (0) 4 72 18 20 00
www.manitowoccrane.com

TOPKIT MD 265 B1 J12
Réf. 2003 48 LYR 4

Copyright.Reproduction interdite © POTAIN 2003

Réalisation Sedoc